

Five Timepieces

for Jazz Cello and String Orchestra

♩ = 140

1. Soaring Flight

4 A 31 pizz.

37 B A7(SUS4) F#9

44 A7(SUS4) D7(add4)

C Em7(SUS4) F#9 A7(SUS4)

60 F#9 C(add9)/E D7(add4)

67 D A7(SUS4) F#9 arco f

77 A7(SUS4) D7(add4) Em7(SUS4) F#9

86 A7(SUS4) F#9

94 C(add9)/E D7(add4)

Solo Cello

2

101 **E** solo **A7(sus4)** **F⁶/₉**

109 **A7(sus4)** **D7(add4)** **Em7(sus4)**

117 **F⁶/₉** **A7(sus4)**

125 **F⁶/₉** **C(add9)/E** **D7(add4)**

133 **F** **4** **F⁶/₉** **A7(sus4)**

142 **D7(add4)** **Em7(sus4)**

149 **G** **4** **A7(sus4)** **F⁶/₉**

158 **C(add9)/E** **D7(add4)** **pizz.**

165 **A7(sus4)** **H** **5**

175 **2** **A7(sus4)** **2**

Solo Cello

2. Keen

3

♩ = 84

4

I

F#m arco A C#m E Em G

8

Bm D F#m A C#m E Em G

12

Bm D J Dm F Am C F Dm

16

C Am Dm F Am C Cm G Gm

22

K

F#m A (+ embellishments) C#m E Em G Bm D

26

F#m A C#m E Em G Bm D

30

L

Dm F Am C F Dm C Am

34

Dm F Am C Cm G Gm

Solo Cello

4

39 **M** solo
F#m A C#m E Em G Bm D F#m A C#m E




45 Em G Bm D **N** Dm F Am C F Dm C Am



51 Dm F Am C Cm G Gm



56 **O** (F#m) 8 Dm **P** F Am C F Dm C



67 Am Dm F Am C Cm G Gm



72 **Q** fills Cm G Gm Cm G



78 Gm Cm G Gm



3. Gordian Note

♩ = 50

Cadenza

G#° to Eb/D **R**

4 8

14 **S**

20 **T**

25

30 **U** solo
 EbΔ BmΔ GΔ EbΔ BmΔ GΔ EbΔ BmΔ

35 GΔ GmΔ EbΔ BmΔ GΔ **V** D°/G F°/Bb

41 G#°/C# EbΔ BΔ EbΔ BΔ EbΔ BΔ GΔ

46 **W** fills
 .. EbΔ BmΔ GΔ EbΔ BmΔ GΔ EbΔ BmΔ

51 GΔ GmΔ EbΔ BmΔ rit. Bm¹¹

Solo Cello
4. Moonburst

6 ♩ = 120

4 **X**

12

21 **Y**

29

37 **Z**

f

44

AA solo
53 **Dm** **G(SUS4)**

61 **Dm** **G(SUS4)**

BB

69 **Bb/D** **F/E** **Bb/F** **F** **Gm11**

77 **GbΔ(♯11)**

CC

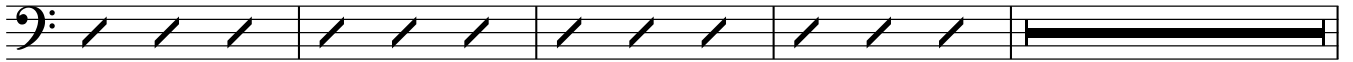
85 **Am(SUS4)** **Bb(♯9)** **Bm** **Bb(♯9)** **Am(SUS4)** **Bb(♯9)**

91 **Am(SUS4)** **Bb(♯9)** **Bm** **Bb(♯9)** **Am(SUS4)** **Bb(♯9)** **Am(SUS4)**

97 $A\flat\Delta(\sharp 11)$

DD

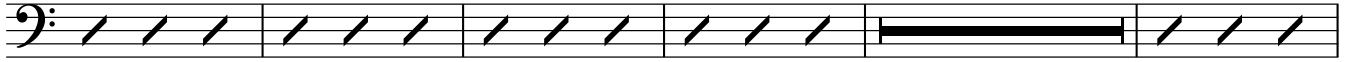
4



105 $G(SUS4)$

4

$G(SUS4)$



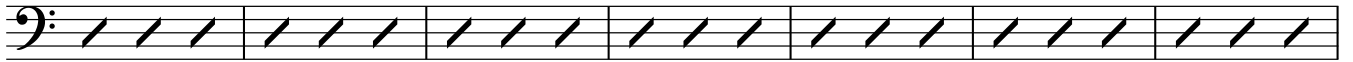
114

$B\flat/D$

F/E

$B\flat/F$

F



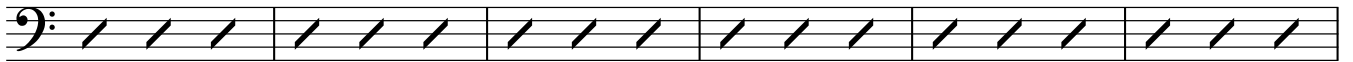
EE

121 Gm^{11}



$G\flat\Delta(\sharp 11)$

129



135



5. Melting Ice

Elastic phrasing $\text{♩} = 108$

$D(SUS4)/F\sharp$
fills

Am

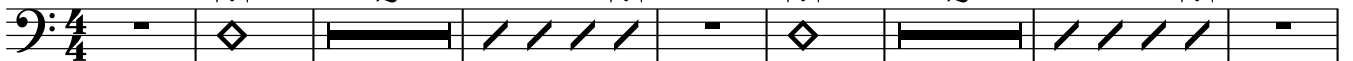
Bm^7

$E(SUS4)$

2

2

2



12 $C\Delta$

$D(SUS4)$

FF Steady $\text{♩} = 80$

pizz.

2



19



24

GG



Solo Cello

8

30 solo
 $A^{\flat}\Delta$ C_M/F $A^{\flat}\Delta$ C_M/F $G^{\flat}/9$

35 $B^{\flat}M7$ $G^{\flat}/9$ $B^{\flat}M7$ B_M7 G^{Δ}

40 B_M7 G^{Δ} C^{Δ} D/E C^{Δ}

45 **HH** $A^{\flat}\Delta$ C_M/F $A^{\flat}\Delta$ C_M/F

50 $G^{\flat}/9$ $B^{\flat}M7$ $G^{\flat}/9$ $B^{\flat}M7$

54 B_M7 G^{Δ} B_M7 G^{Δ} C^{Δ}

59 D/E C^{Δ} **II** arco $D^{(SUS4)}/F^{\#}$
ff

64 A_M/C B_M7 $E^{(SUS4)}$

69 C^{Δ} $D^{(SUS4)}$
p *f*

73 **Tempo primo** ($\text{♩} = 108$) *pizz.* *p* rit. arco