

CONCERTO FOR JAZZ CELLO AND ORCHESTRA

Solo Cello

1. BLACK RUN

Svante Henryson
arr. S. Henryson/ S. Behrisch

1 $\text{♩} = 260$
f

6 **9**

11

17

22 **25**

27

33

38

43 **45**
mf

49

55

60 **61** pizz.
p

2. GORDIAN NOTE

Ballad, straight 8's ♩ = 50

200

5

205

Measures 200-205: Bass clef, 5-measure rest, then melodic line starting at measure 205. Dynamics: *p*, *freely*.

210

213

Measures 210-213: Bass clef, melodic line. Dynamics: *f*.

217

221

SOLO (PIZZ)

Measures 217-221: Treble clef, melodic line. Dynamics: *p*. Chords: EbΔ, BmΔ, GΔ, EbΔ, BmΔ.

224

SOLO ARCO)

Measures 224-230: Treble clef, slash notation. Chords: GΔ, EbΔ, BmΔ, GΔ, GmΔ, EbΔ, BmΔ, GΔ, Dø/G.

231

233

SOLO

Measures 231-233: Treble clef, slash notation. Chords: Fø/Bb, G#ø/C#, GΔ.

235

240

Measures 235-240: Treble clef, slash notation, triplets, and Bm¹¹. Time signature: 2/4.

3. TIME WILL TELL

Straight 8's, half time, open feel ♩ = 100

244 pizz. *mp*

257 **259** **267** arco

270 **275**

278 **279** **286** 3

289 SOLO

A/C# A Dm ESUS 2 Em7

300 FΔ BbΔ EbΔ ESUS

mf

308 A Dm/F G/F Cm/Eb D/F# Gm G/F C/E A/G D/F# B

316 Em CΔ Bm7/D GΔ/B

320 C#∅ CΔ Bm7 ESUS rit.

4. LEAPFROG

332 Up tempo swing ♩ = 240

336

344

8

360

5.SLAVE TO THE FALL LINE

457 ← ♩ = ♩ →

Straight feel ♩ = 120

4

465

469

472

473

475

478

481

pizz.

483

485 arco

pizz.

arco

490

pizz.

491

arco

pizz.

495

arco

499



504



507

arco

p

508



512



mf

p

pizz.

515



arco

f

pizz.

p

523

SOLO (PIZZ)

520



arco

f

p

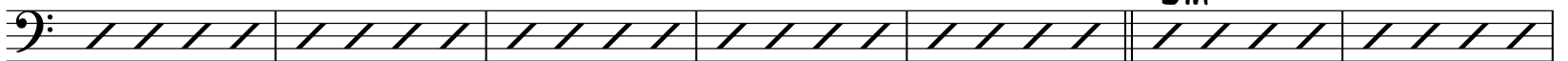
07(9)

526

531

(ARCO)

Dm¹¹



mf

533

Dadd4

Dm¹¹

Dadd4

539

Dm¹¹

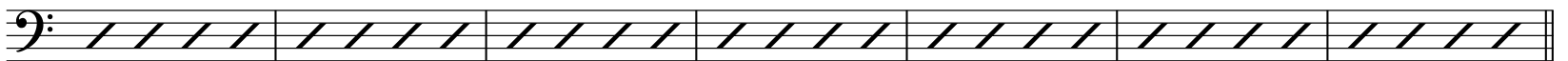


540

Dadd4

Dm¹¹

Dadd4



547 SOLO Fm^6 551

p *f*

552

555 557 pizz.

mf *p*

558 SOLO $D7(\sharp 9)$

562 565 SOLO $D7(\sharp 9)$

566 SOLO $D7(\sharp 9)$

569 SOLO $D7(\sharp 9)$

572

574 f ff

576 SOLO $D7(\sharp 9)$ accel.