

A RUBATO

HIN

SVANTE HENRYSON

Section A, measures 1-4. The music is in bass clef with a key signature of one sharp (F#) and a 3/4 time signature. It begins with a repeat sign. The first two measures feature a melodic line with eighth notes and a bass line with chords. The final measure of the section ends with a double bar line.

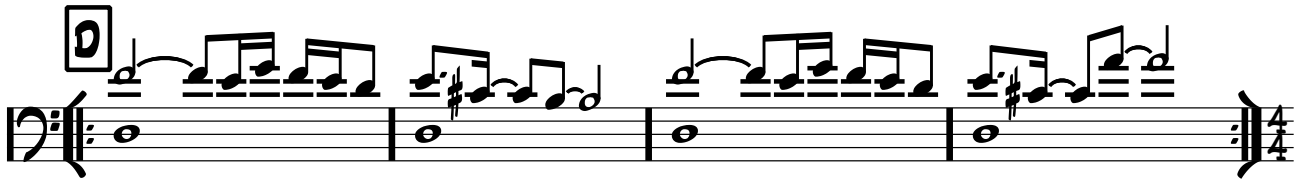
B

Section B, measures 1-5. The music is in bass clef with a key signature of one sharp (F#) and a 4/4 time signature. It consists of five measures of continuous eighth-note patterns in both the upper and lower staves, creating a rhythmic accompaniment.

C TEMPO

Section C, measures 1-4. The music is in bass clef with a key signature of one sharp (F#) and a 4/4 time signature. It features a melodic line with eighth-note patterns and a bass line with chords. The section concludes with a double bar line.

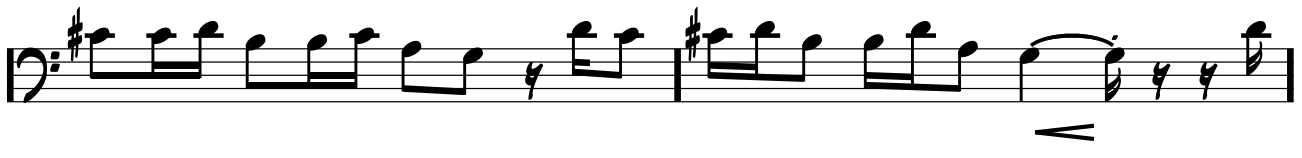
D



E



F



A RUBATO

HIN

SVANTE HENRYSON

Section A, measures 1-4. The music is in 3/4 time and D major. It begins with a repeat sign. The melody consists of eighth and quarter notes, while the bass line features a steady eighth-note accompaniment.

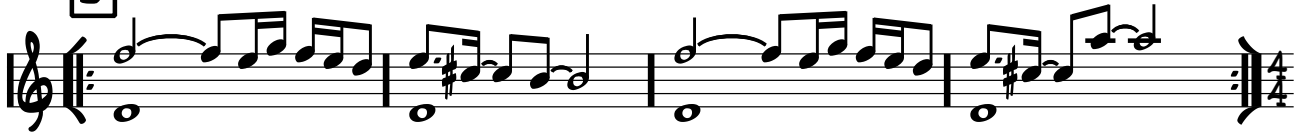
B

Section B, measures 5-10. The music changes to 4/4 time. The melody continues with eighth and quarter notes, and the bass line maintains a consistent eighth-note accompaniment.

C TEMPO

Section C, measures 11-14. The music returns to 3/4 time. It features a more complex melody with sixteenth-note runs and a bass line with eighth-note accompaniment. The section concludes with a repeat sign.

D



E



F

